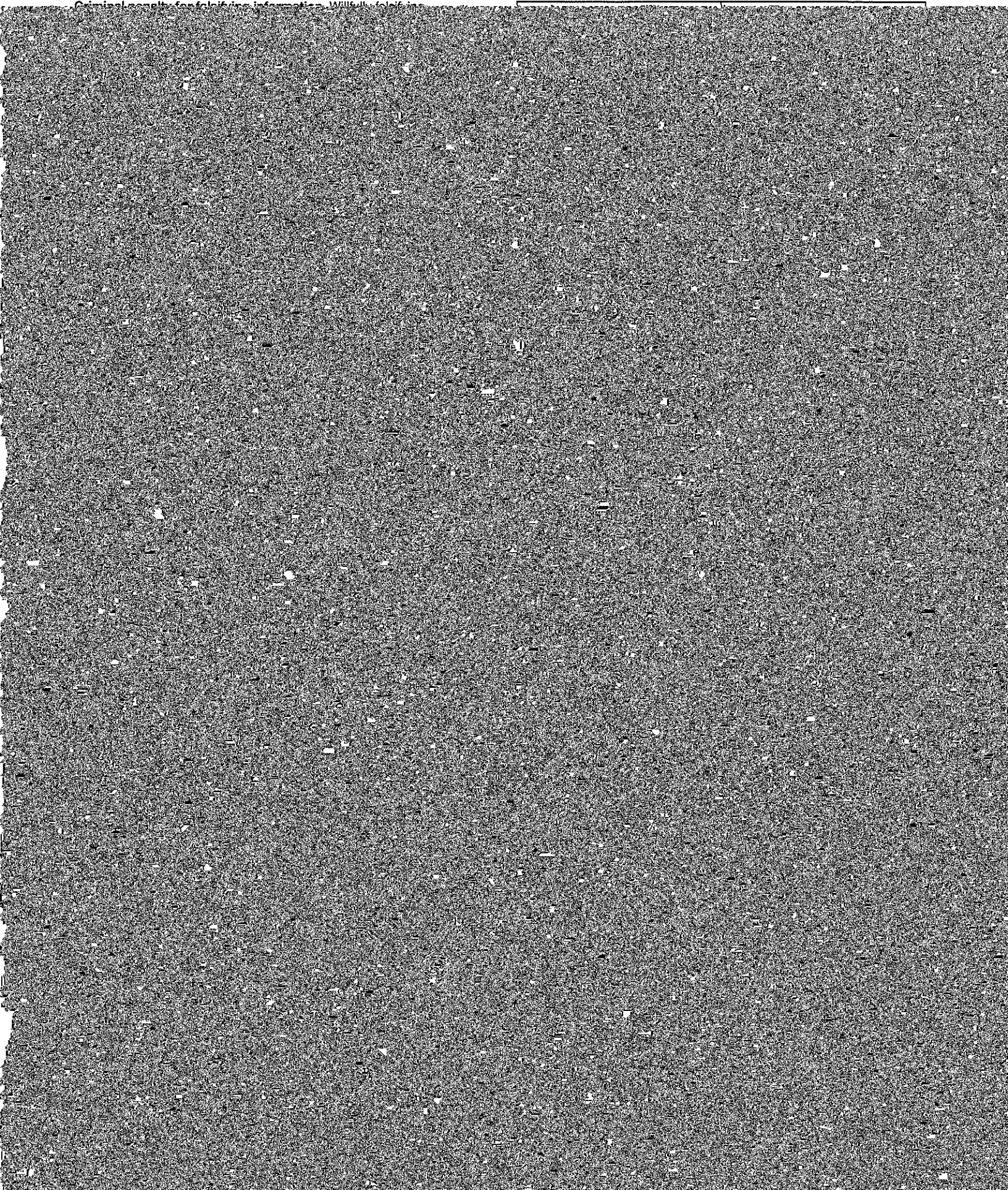
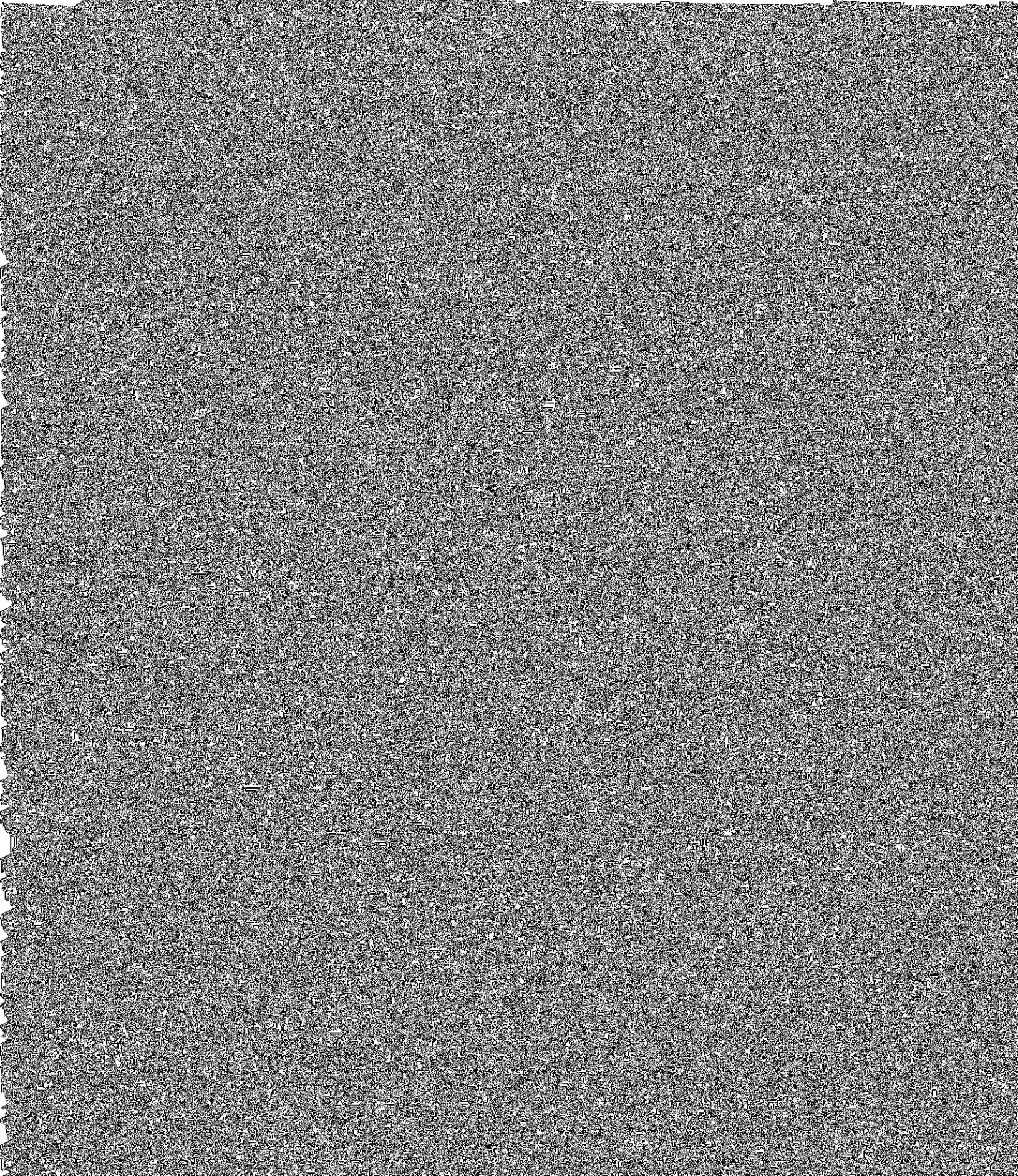


Criminal records for foreign information. Will file for information



The following chart shows types of payments that may be exempt from backup withholding. The chart applies to the payment recipient listed.

M—A tax exempt trust under a section 403(b) plan or section 457(g) plan.



The IRS does not initiate contacts with taxpayers via emails. Also, the IRS does not request personal detailed information through email or ask

Privacy Act Notice

